

Assess Vulnerability and Risk | Preliminary Results Feedback

WHO

This exercise is for the full planning team in the Assess Vulnerability and Risk step.

WHAT

These worksheets provide critical feedback for the preliminary assessment and should be returned to the practitioner after the preliminary results meeting. This feedback will be compiled and incorporated into finalizing the assessment.

SUPPORTING RESOURCES

- The [3.4 Ruleset Development - Worksheet](#) will provide the rulesets applied in this project.
- Use [2.3 Community Asset Themes - Worksheet](#) as a reference for the project's defined community asset themes.

INSTRUCTIONS

- Depending on the size of the group, either individually fill in this worksheet or divide into groups.

For each hazard...

- When reviewing the results, consider the questions in the context of each hazard.
- Refer to the supporting resources as needed to help review the preliminary results and provide as much detail as possible in your responses.
- At the end of the preliminary results meeting return this worksheet to the practitioner! This is important to be able to incorporate any changes into the assessment.

Community asset themes or Areas of Interest

List the community asset themes below or any other areas of interest you may be thinking of as they relate to each hazard.

Data and Criteria

Review vulnerability and risk rulesets used for the preliminary assessment. Should anything be modified based on your knowledge and expertise? Is there available local data that is not being used that would change the assessment?

Topics of Concern

Review what the community values and their goals, as well as the scope of the project. Based on the preliminary results, what are some concerns you have for specific services? For example, emergency response. What are the potential critical thresholds?

What are we already doing?

Are you aware of any existing projects or plans that are attempting to address these concerns? If yes, please list them below.

Any other comments/concerns?

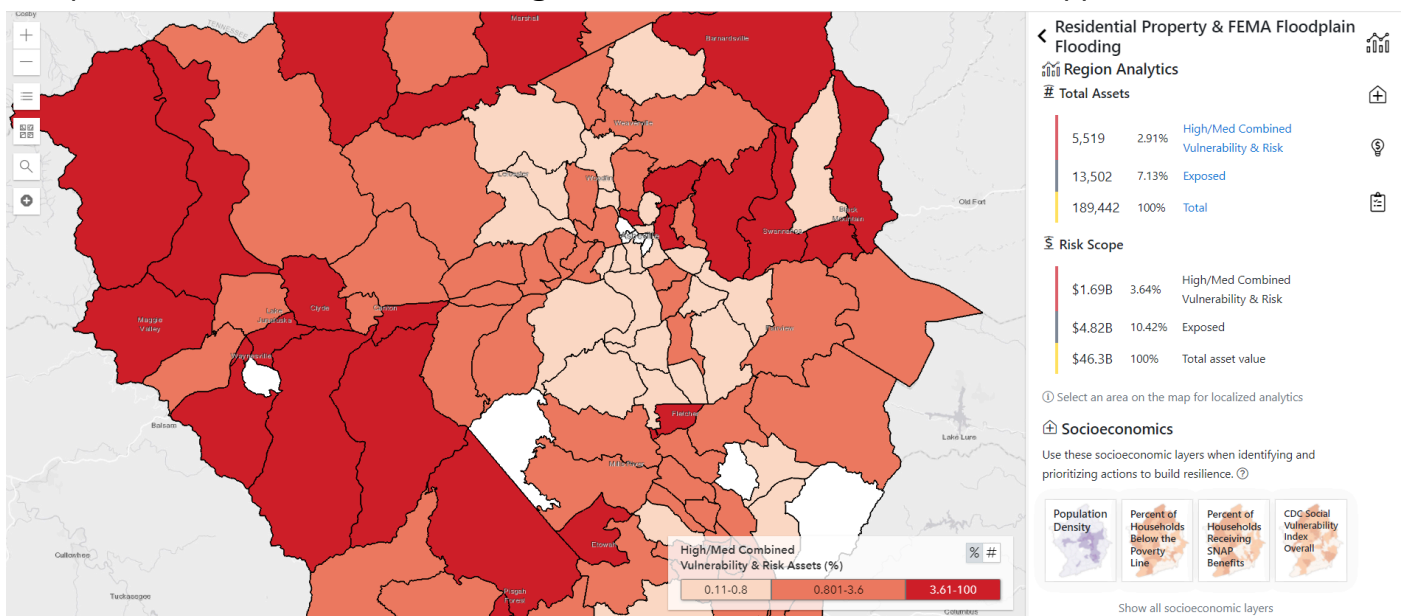
IMPLEMENTATION EXAMPLES

Spatial Assessment Objectives

The following objectives are met through the completion of the spatial vulnerability and risk assessment. One assessment example, using AccelAdapt, is shown here.

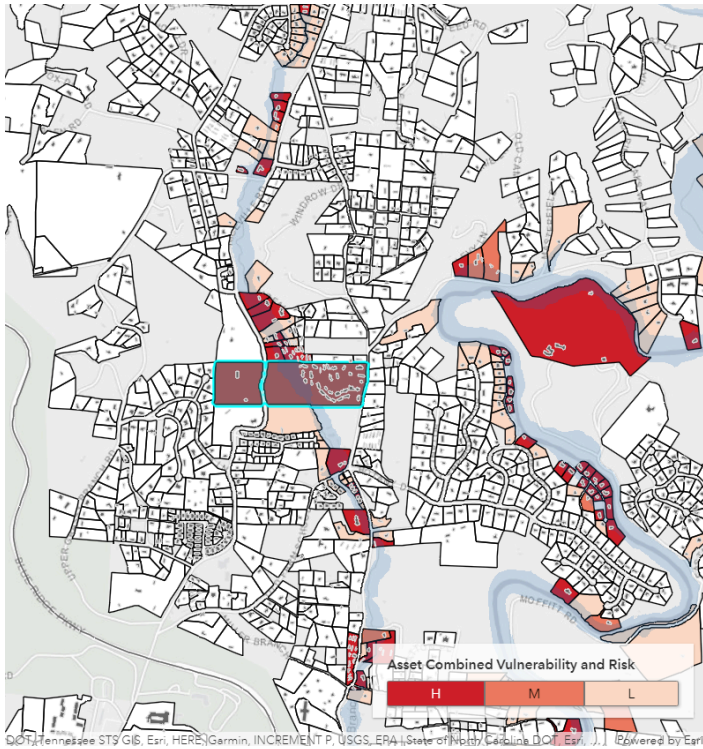
- Complete preliminary assessment of vulnerability and risk, with in-depth quality control process
- Receive and apply feedback to preliminary assessment after preliminary results meeting
- Finalize spatial assessment, with in-depth quality control process

The assessment for this region in North Carolina was completed, with feedback and detailed quality control. At the aggregate scale, the results can be viewed at the census tract level. A more detailed view at the parcel level can be used to interrogate the results and view the rulesets applied.

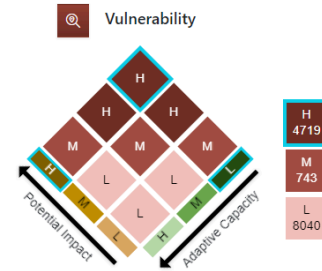


Results can be viewed at the aggregate/ neighborhood scale, where dark red indicates higher vulnerability and risk.

At the parcel level, the practitioner can return to the rulesets and community asset themes and types to begin to develop insights and prepare for the final results meeting with the community.



> Residential Property & FEMA Floodplain Flooding



Potential Impact	Adaptive Capacity		
H	H	Structure in inundation extent and multi_residence, group_home, nursing_home, mobile_home, public_housing	Structure built out of floodplain or structure in floodplain built after BFE requirements were raised to 1-2ft
M	M	Structure in inundation extent	Structure in floodplain built after BFE requirements were in place
L	L	No structure in inundation extent (land only)	Structure in floodplain built before BFE requirements were in place

Understand results at the parcel level using the rulesets and other factors developed thus far.